

SET-04**Series JSK/2**Code No. **031/2/4**

Roll No.

--	--	--	--	--	--	--	--

Candidates must write the Code on the title page of the answer-book

- (i) Please check that this question paper contains **12** printed pages.
- (ii) Please check that this question paper contains **60** Multiple Choice Questions (MCQs).
- (iii) Question Paper Code given on the top right hand side of the question paper should be written in the appropriate place in the OMR Sheet by the candidate
- (iv) 20 minute additional time has been allotted to read this question paper prior to actual time of commencement of the examination.

SCIENCE (THEORY)**Term-I**

Time allowed : 90 minutes

Maximum Marks : 40

General Instructions :

Read the following instructions very carefully and strictly follow them :

- (i) This question paper contains **60 questions** out of which 50 questions are to be attempted. All questions carry equal marks.
- (ii) This question paper consists of four sections — Section A, B, and C
- (iii) Section A contains **24 questions**. Attempt any 20 questions from Q. No. 1 to 24.
- (iv) Section B contains **24 questions**. Attempt any 20 questions from Q. No. 25 to 48.
- (v) Section C contains **12 questions** (Case-Based Study Questions). Attempt any **10** questions from **Q. No. 49 to 60**.
- (vi) There is only one correct Option for every multiple choice question (MCQ). Marks will not be awarded for answering more than one option.
- (vii) There is no negative marking.

SECTION - A

Section-A consists of 24 questions (Q. No. 1 to 24). Attempt any 20 questions from this section. The first attempted 20 questions would be evaluated.

1. A student took Sodium sulphate solution in a test tube and added Barium chloride solution to it. He observed that an insoluble substance has formed. The colour and molecular formula of the insoluble substance is :

(a) Grey, Ba₂SO₄ (b) Yellow, Ba(SO₄)₂ (c) White, BaSO₄ (d) Pink, BaSO₄

Ans. (c)

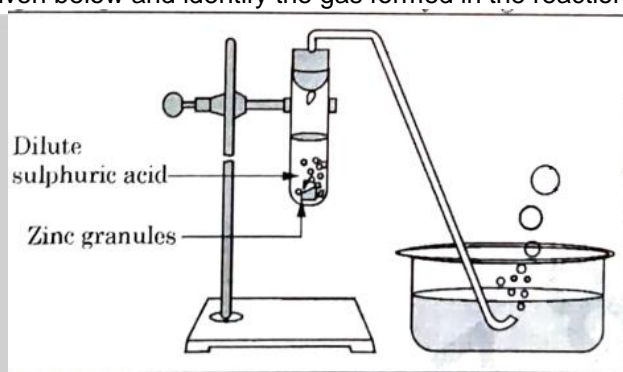
2. Which of the following oxide(s) is/are soluble in water to form alkaline?

(i) Na₂O (ii) SO₂ (iii) K₂O (iv) NO₂

(a) (i) and (iii) (b) (i) only (c) (ii) and (iv) (d) (iii) only

Ans. (a)

3. Study the diagram given below and identify the gas formed in the reaction?



- (a) Carbon dioxide which extinguishes the burning candle.
 (b) Oxygen due to which the candle burns more brightly
 (c) Sulphur dioxide which produces a suffocating smell
 (d) Hydrogen which while burning produces a popping sound

Ans. (d)

4. Sodium reacts with water to form sodium hydroxide and hydrogen gas. The balanced equation which represents the above reaction is :

(a) Na(s) + 2H₂O(l) → 2NaOH(aq) + 2H₂(g) (b) 2Na(s) + 2H₂O(l) → 2NaOH(aq) + H₂(g)
 (c) 2Na(s) + 2H₂O(l) → NaOH(aq) + 2H₂(g) (d) 2Na(s) + H₂O(l) → 2NaOH(aq) + 2H₂(g)

Ans. (b)

5. Which of the options in the given table are correct ?

Option	Natural Source	Acid Present
(i)	Orange	Oxalic acid
(ii)	Sour milk	Lactic acid
(iii)	Ant sting	Methanoic acid
(iv)	Tamarind	Acetic acid

(a) (i) and (ii) (b) (i) and (iv) (c) (ii) and (iii) (d) (iii) and (iv)

Ans. (c)

6. C₆H₁₂O₆(aq) + 6O₂(aq) → 6CO₂(aq) + 6H₂O(l)
 The above reaction is a/an

(a) displacement reaction (b) endothermic reaction
 (c) exothermic reaction (d) neutralization reaction

Ans. (c)

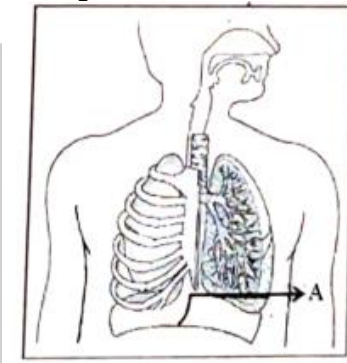
13. The correct statements with reference to single celled organisms are
 (i) Complex substances are not broken down into simpler substances.
 (ii) Simple diffusion is sufficient to meet the requirement of exchange of gases
 (iii) Specialized tissues perform different functions in the organism
 (iv) Entire surface of the organism is in contact with the environment for taking in food.

Ans. (a) (i) and (iii) (b) (ii) and (iii) (c) (ii) and (iv) (d) (i) and (iv)
 (c)

14. Which among the following is not removed as a waste product from the body of a plant?
 (a) Resins and Gums (b) Urea (c) Dry Leaves (d) Excess Water

Ans. (b)

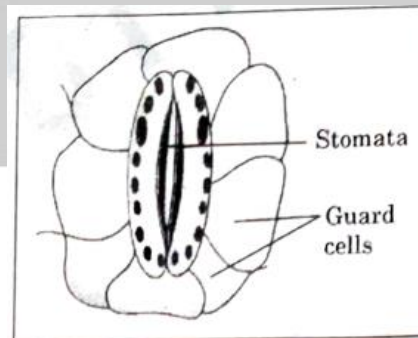
15. Which of the following statements are correct in reference to the role of A (shown in the given diagram) during a breathing cycle in human beings?



- (i) It helps to decrease the residual volume of air in lungs.
 (ii) It flattens as we inhale
 (iii) It gets raised as we inhale
 (iv) It helps the chest cavity to become larger.

Ans. (a) (ii) and (iv) (b) (iii) and (iv) (c) (i) and (ii) (d) (i), (ii) and (iv)
 (a)

16. Which one of the following conditions is true for the state of stomata of a green leaf shown in the given diagram?



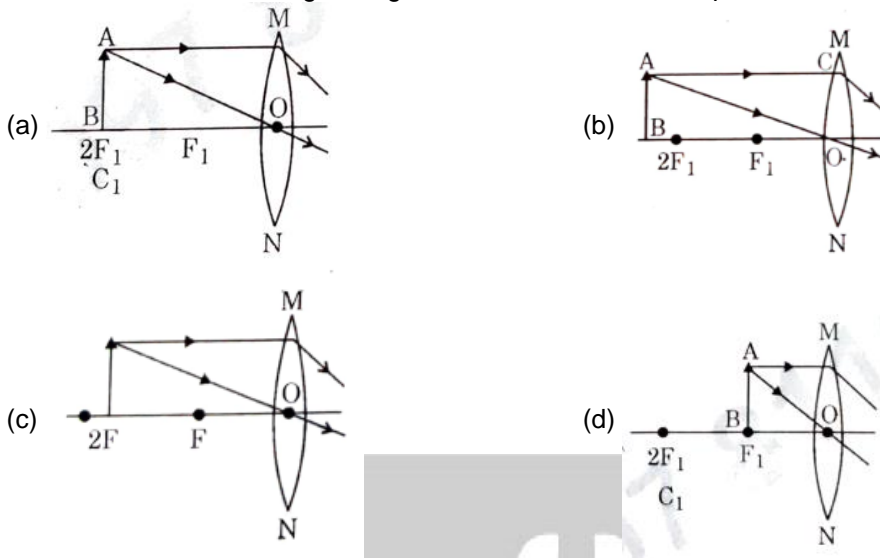
- (a) Large amount of water flows into the guard cells.
 (b) Gaseous exchange is occurring in large amount.
 (c) Large amount of water flows out from the guard cells.
 (d) Large amount of sugar collects in the guard cells.

Ans. (c)

17. In which of the following is a concave mirror used?
 (a) A solar cooker (b) A rear view mirror in vehicles
 (c) A safety mirror in shopping malls (d) In viewing full size image of distant tall buildings.

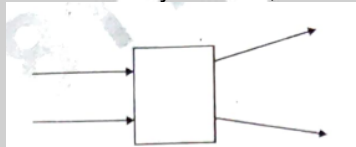
Ans. (a)

18. A student wants to obtain magnified image of an object AB as on a screen. Which one of the following arrangements shows the correct position of AB for him/her to be successful?



Ans. (c)

19. The following diagram shows the use of an optical device to perform an experiment of light. As per the arrangement shown, the optical device is likely to be a ;



- (a) Concave mirror (b) Concave Lens (c) Convex mirror (d) Convex lens
- Ans. (b)

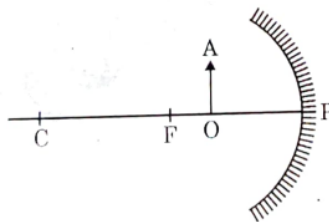
20. A ray of light, starting from air passes through medium A of refractive index 1.50, enters medium B of refractive index 1.33 and finally enters medium C of refractive index 2.42. If this ray emerges out in air from C, then for which of the following pairs of media the bending of light is least ?

- (a) air-A (b) A-B (c) B-C (d) C-air
- Ans. (b)

21. Which of the following statements is not true for scattering of light?
- (a) Colour of the scattered light depends on the size of particles of the atmosphere.
 (b) Red light is least scattered in the atmosphere.
 (c) Scattering of light takes place as various colours of white light travel with different speed in air.
 (d) The fine particles in the atmospheric air scatter the blue light more strongly than red. So the scattered blue light enters our eyes.

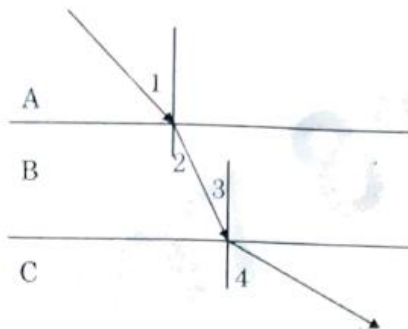
Ans. (c)

22. For the diagram shown, according to the new Cartesian sign convention the magnification of the image formed will have the following specifications:



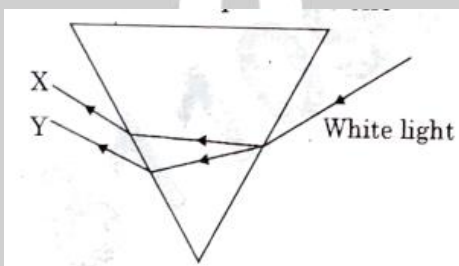
- (a) Sign — Positive, Value — Less than 1 (b) Sign — Positive, Value — More than 1
 (c) Sign — Negative, Value — Less than 1 (d) Sign — Negative, Value — More than 1
- Ans. (b)

23. A ray of light is incident as shown. If A, B and C are three different transparent media, then which among the following options is true for the given diagram ?



- Ans. (a) $\angle 1 > \angle 4$ (b) $\angle 1 < \angle 2$ (c) $\angle 3 = \angle 2$ (d) $\angle 3 > \angle 4$
(c)

24. In the diagram given below, X and Y are the end colours of the spectrum of white light. The colour of 'y' represents the



- Ans. (a) Colour of sky as seen from earth during the day.
(b) Colour of the sky as seen from the moon.
(c) Colour used to paint the danger signals.
(d) Colour of sun at the time of noon
(c)

SECTION – B

Section-B consists of 24 questions (Q. No. 25 to 48). Attempt any 20 questions from this section. The first attempted 20 questions would be evaluated.

25. Which one of the following reactions is categorised as thermal decomposition reaction ?
(a) $2\text{H}_2\text{O}(l) \rightarrow \text{H}_2(g) + \text{O}_2(g)$ (b) $2\text{AgBr}(s) \rightarrow 2\text{Ag}(s) + \text{Br}_2(g)$.
(c) $2\text{AgCl}(s) \rightarrow 2\text{Ag}(s) + \text{Cl}_2(g)$ (d) $\text{CaCO}_3(s) \rightarrow \text{CaO}(s) + \text{CO}_2(g)$

Ans. (d)

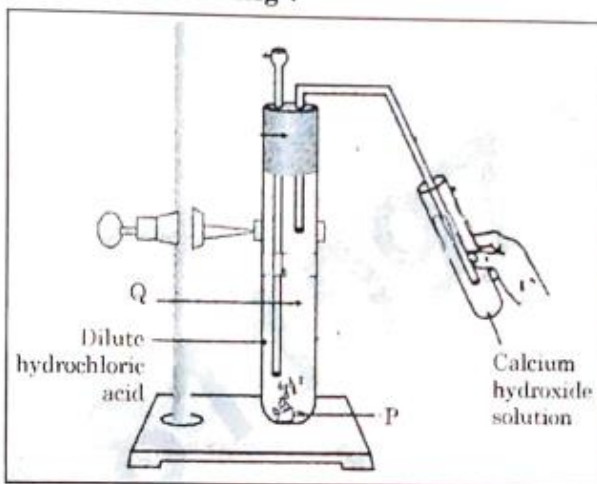
26. Consider the pH of the following acidic samples :

S. No.	Sample	pH Value
1.	Lemon Juice	2.2
2.	Gatric Juice	1.2.
3.	Vinegar	3.76
4.	Dil. Acetic acid	3.0

The decreasing order of their H^+ ion concentration is

- Ans. (a) $3 > 4 > 1 > 2$ (b) $2 > 1 > 3 > 4$ (c) $2 > 1 > 4 > 3$ (d) $3 > 4 > 2 > 1$
(c)

27. Study the 'experimental set up shown in given figure and choose the correct option from the following



P	Q	Change observed in calcium hydroxide solution
(a) K ₂ CO ₃	Cl ₂ gas	No change
(b) KHCO ₃	O ₂ gas	No change
(c) K ₂ CO ₃	H ₂ gas	Turns milky
(d) K ₂ CO ₃	CO ₂ gas	Turns milky

Ans. (c)

28. Which one of the following structures correctly depicts the compound CaCl₂?



Ans. (c)

29. The pair(s) which will show displacement reaction is/are

- (i) NaCl solution and copper metal
- (ii) AgNO₃ solution and copper metal
- (iii) Al₂(SO₄)₃ solution and magnesium metal
- (iv) ZnSO₄ solution and iron metal

- (a) (ii) only (b) (ii) and (iii) (c) (iii) and (iv) (d) (i) and (ii)

Ans. (b)

30. Which of the following salts do not have the water of crystallisation?

- (i) Bleaching powder
- (ii) Plaster of Paris.
- (iii) Washing soda
- (iv) Baking soda

- (a) (ii) and (iv) (b) (i) and (iii) (c) (ii) and (iii) (d) (i) and (iv)

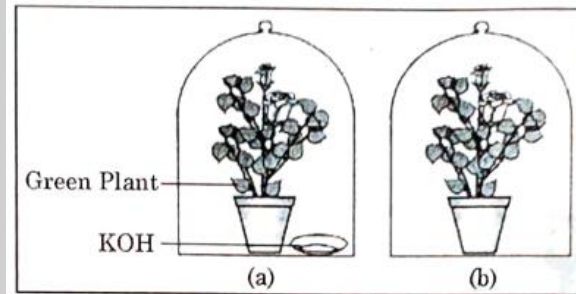
Ans. (d)

Question no. 31-35 consists of two statements - Assertion (A) and reason (R).

Answer these questions selecting the appropriate option given below:

- (a) Both (A) and (R) are true and (R) is the correct explanation of (A).
- (b) Both (A) and (R) are true but (R) is not the correct explanation of (A).
- (c) (A) is true, but (R) is false
- (d) (A) is false, but (R) is true

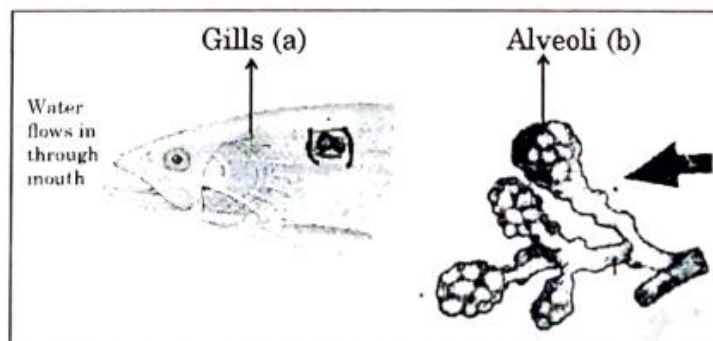
31. **Assertion (A):** sodium hydrogen carbonate is used as an ingredient in antacids.
Reason (R): NaHCO_3 , is a mild non-corrosive basic salt.
Ans. (b)
32. **Assertion (A):** Burning of Natural gas is an endothermic process.
Reason (R): Methane gas combines with oxygen to produce carbon dioxide and water.
Ans. (d)
33. **Assertion (A):** Nitrogen is an essential element for plant growth and is taken up by plants in the form of inorganic nitrates or nitrites.
Reason (R): The soil is the nearest and richest source of raw materials like nitrogen, phosphorus and other minerals for the plants.
Ans. (b)
34. **Assertion (A):** Sun appears reddish at the time of sunrise and sunset.
Reason (R): Distance travelled by sunlight in the atmosphere is lesser during sunrise and sunset as compared to noon.
Ans. (c)
35. **Assertion (A):** Hydrochloric acid helps in the digestion of food in the stomach.
Reason (R): Hydrochloric acid creates an acidic medium to activate protein digesting enzymes.
Ans. (a)
36. A student was asked to write a stepwise procedure to demonstrate that carbon dioxide is necessary for photosynthesis. He wrote the following steps. The wrongly worded step is -



- (a) Both potted plants are kept in dark room for at least three days.
(b) Bottom of the bell jars is sealed to make them air tight.
(c) Both potted plants are kept in sunlight after the starch test..
(d) A leaf from both the plants is taken to test the presence of starch.

Ans. (c)

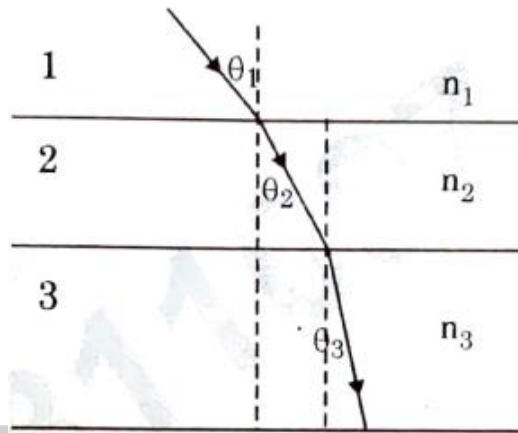
37. Respiratory structures of two different animals-a fish and a human being are as shown. Observe (a) and (b) and select one characteristic that holds true for both of them.



- (a) Both are placed internally in the body of animal.
(b) Both have thin and moist surface for gaseous exchange.
(c) Both are poorly supplied with blood vessels to conserve energy.
(d) In both the blood returns to the heart after being oxygenated.

Ans. (b)

45. In the diagram shown above n_1 , n_2 , and n_3 , are refractive indices of the media 1, 2 and 3 respectively. which one of the following is true in this case?



- Ans. (a) $n_1 = n_2$ (b) $n_1 > n_2$ (c) $n_2 > n_3$ (d) $n_3 > n_1$
(d)

46. The refractive index of medium A is 1.5 and that of medium B is 1.33. if the speed of light in air is 3×10^8 m/s, what is the speed of light in medium A and B respectively?

- (a) 2×10^8 m/s and 1.33×10^8 m/s (b) 1.33×10^8 m/s and 2×10^8 m/s
(c) 2.25×10^8 m/s and 2×10^8 m/s (d) 2×10^8 m/s and 2.25×10^8 m/s.

Ans. (d)

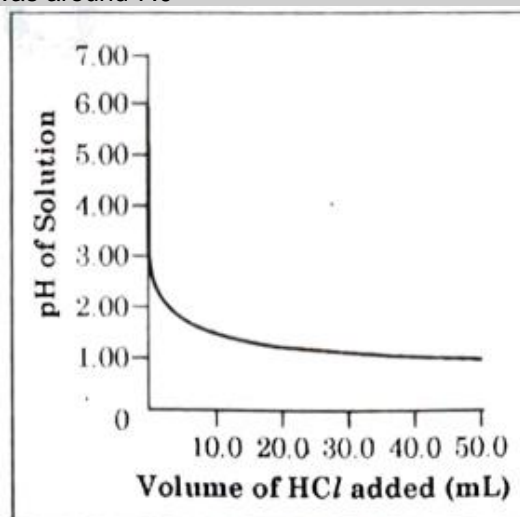
47. An object of height 4 cm is kept at a distance of 30 cm from the pole of a diverging mirror. If the focal length of the mirror is 10 cm, the height of the image formed is

- (a) +3.0 cm (b) +2.5 cm (c) + 1.0 cm (d) + 0.75 cm

Ans. (c)

48. 50.0 ml. of tap water was taken in a beaker. Hydrochloric acid was added drop by drop to water. The temperature and pH of the solution was noted. The following graph was obtained. Choose the correct statements related to this activity.

- (i) The process of dissolving an acid in water is highly endothermic
(ii) The pH of the solution increases rapidly on addition of acid.
(iii) The pH of the solution decreases rapidly on addition of acid.
(iv) The pH of tap water was around 7.0



- Ans. (a) (i) and (ii) (b) (i) and (iii) (c) (iii) and (iv) (d) (ii) and (iv)
(c)

SECTION -C

Section-C consists of three cases followed by questions. There are a total of 12 questions (Q. No. 49 to 60) in this section. Attempt any 10 questions from this section. The first attempted 10 questions would be evaluated.

Case-I:

A student, took four metals P, Q, R and S and carried out different experiments to study the properties of metals. Some of the observations were:

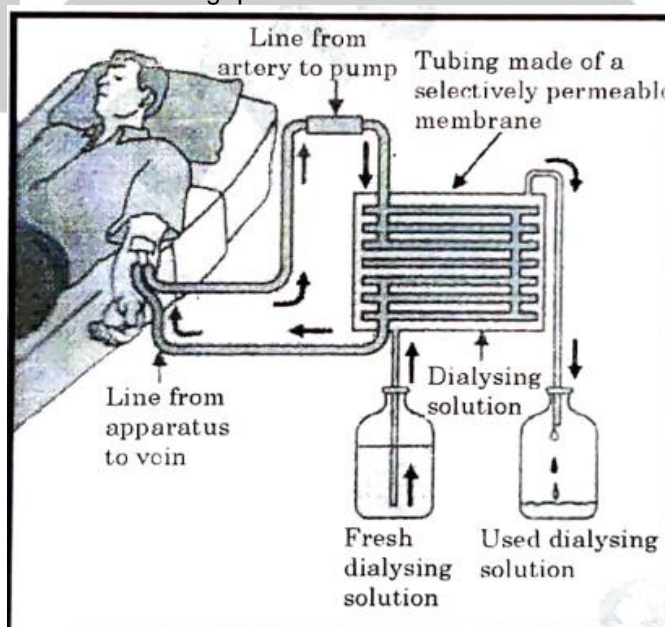
- All metals could not be cut with knife except metal R.
- Metal P combined with oxygen to form an oxide M_2O_3 which reacted with both acids and bases.
- Reaction with water.
P- Did not react either with cold or hot water but reacted with steam
Q- Reacted with hot and the metal started floating.
R- Reacted violently with cold water.
S- Did not react with water at all

Based on the above observations answer the following:

49. Out of the given metals, the one which needs to be stored used kerosene is
 (a) P (b) R (c) S (d) Q
Ans. (b)
50. Out of the given metals, the metal Q is
 (a) Iron (b) Zinc (c) Potassium (d) Magnesium
Ans. (d)
51. Metal which forms amphoteric oxides is
 (a) P (b) Q (c) R (d) S
Ans. (a)
52. The increasing order of the reactivity of the four metals is:
 (a) $P < Q < R < S$ (b) $S < R < Q < P$ (c) $S < P < Q < R$ (d) $P < R < Q < S$
Ans. (c)

Case-II:

The figure shown below represents a common type of dialysis called as Hemodialysis. It removes waste products from the blood. Such as excess salts and urea which are insufficiently removed by the kidney in patients with kidney failure. During the procedure, the patient's blood is cleaned by filtration through a series of semi-permeable membranes before being returned to the blood of the patient. On the basis of this, answer the following questions:



53. The Hemodialyzer has semi-permeable lining of tubes which help to:

- (a) To maintain osmotic pressure of blood.
- (b) To filter nitrogenous wastes from the dialyzing solution.
- (c) In passing the waste products in the dialyzing solution.
- (d) To pump purified blood back into the body of the patient.

Ans. (c)

54. Which one of the following is not a function of artificial kidney?

- (a) To remove nitrogenous wastes from the blood.
- (b) To remove excess fluids from the blood.
- (c) To reabsorb essential nutrients from the blood.
- (d) To filter and purify the blood.

Ans. (c)

55. The used dialysing' solution is rich in

- (a) urea and excess salts
- (b) blood cells proteins
- (c) Lymph
- (d) Proteins

Ans. (a)

56. Which part of the nephron in human kidney, serves the function of reabsorption of certain substances?

- (a) Glomerulus
- (b) Bowmans capsule
- (c) Tubules
- (d) collecting duct

Ans. (c)

Case-III:

A compound microscope is an instrument which consists of two lenses L_1 and L_2 . The lens L_1 , called objective, forms a real, inverted and magnified image of the given object. This serves as the object for the second lens L_2 ; the eye piece. The eye piece functions like a simple microscope or magnifier. It produces the final image, which is inverted with respect to the original object, enlarged and virtual.

57. What types of lenses must be L_1 and L_2 ?

- (a) Both concave.
- (b) Both convex
- (c) L_1 - concave and L_2 - convex
- (d) L_1 - convex and L_2 - concave

Ans. (b)

58. What is the value and sign of magnification (according to the new Cartesian sign convention) of the image formed by L_1 ?

- (a) Value = less than 1 and Sign = Positive.
- (b) Value = more than 1 and Sign = Positive
- (c) Value = less than 1 and Sign = Negative
- (d) Value = more than 1 and Sign = Negative

Ans. (d)

59. What is the value and sign of (according to new Cartesian sign convention) magnification of the image formed by L_2 ?

- (a) Value = less than 1 and Sign = Positive
- (b) Value = more than 1 and Sign = Positive
- (c) Value = less than 1 and Sign = Negative
- (d) Value = more than 1 and Sign = Negative

Ans. (b)

60. If power of the eyepiece (L_2) is 5 diopters and it forms an image at a distance of 80 cm from its optical centre, at what distance should the object be?

- (a) 12 cm
- (b) 16 cm
- (c) 18 cm
- (d) 20 cm

Ans. (b)

कुछ सपने
ज़िंदगी भर की
खुशियाँ दे जाते हैं



ACADEMIC STRENGTHS

Qualified & Excellent Faculty



Highly Result Proven and Experienced Faculty Members

Study Material



Topic-wise study material with all the key concepts, problems for practice and important questions are updated regularly

Daily Practice Problems



DPPs are solved daily with the students for practice after every session to ensure proper grasp of concept

Doubt Classes



1 on 1 Doubt Classes are conducted for students to ensure individual doubts are fully cleared

Course Planner



A pre-defined week-wise yearly course planning of lectures, tests & course content

Periodic Tests



Periodic pattern tests are conducted regularly, based on JEE Advanced / Main / NEET

Recorded Video Lecture



Students who missed regular classes can watch recorded video lectures in computer lab to cover up the topics

Olympiad Preparation



Special classes are organised for other National level exams like Olympiads, KVPY

Computer Based Test (CBT)



Online test will be conducted as per the new change in the pattern, for better practice of our students

Board Exam Support



Specialized all Board Exam classes are conducted to ensure success in Board Exams

Make-up Classes



Especially organized for the students who have missed the classes or have doubt in particular topic or chapter

Concept Building Classes



CBC are conducted to have special focus on Important topics

**ADMISSION
OPEN**
for Session 2022-23

**Class
5 to 12 & 12+**

**Target: JEE (Main+ Adv.)
JEE (Main) | NEET
Pre- foundation**

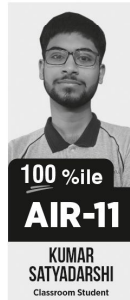
For Apply Online visit www.resonance.ac.in or Call: 9352676055, 9352529244, 7340010332

Results @ Resonance

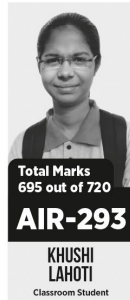
JEE (ADV.) 2021



JEE (MAIN) 2021



NEET (UG) 2021



CS-EXECUTIVE
(December 2020)



Students qualified for

IITs 48 हजार⁺ SINCE 2002

NITs 2.33 लाख⁺ SINCE 2009

NEET 17 हजार⁺ SINCE 2012

Resonance Eduventures Ltd.

Registered & Corporate Office: CG Tower, A-46 & 52, IPIA, Near City Mall, Jhalawar Road, Kota (Rajasthan) - 324005

Toll Free: 1800 258 5555 | Tel. No.: 0744-2777777, 2777700 | Fax : 022-39167222 | CIN: U80302RJ2007PLC024029 | Email: contact@resonance.ac.in