

NSEJS - 2023

A Detailed Analysis by Resonance

NATIONAL STANDARD EXAMINATION IN JUNIOR SCIENCE (NSEJS-2023) is the stage-1 for selection of aspiring and talented students in the Junior Science Olympiad Program. The student can move forward to attend the INJSO after clearing this stage-I.

Eligibility: Only Indian citizens born between January 1, 2006 and December 31, 2007, (both days inclusive) and are students studying in Class X or lower as of JAN 03, 2023, can apply and appear for **NSEJS 26.11.2023**. The student must not appear any of the senior science Olympiad. The student has to himself re-assure his eligibility. At any stage if the student is found to be not eligible for the exam, he/she may be disqualified from the program.

Syllabus: No detailed syllabus is given for NSEJS. There were questions from Physics, Biology and Chemistry.

Question Paper: The medium of test was English only and it comprised of NSEJS For **Part A1**, each correct answer carries 3 marks whereas 1 mark will be deducted for each wrong answer In **Part A2**, you get 6 marks. If all the correct alternative are marked. No Negative marks in this part.

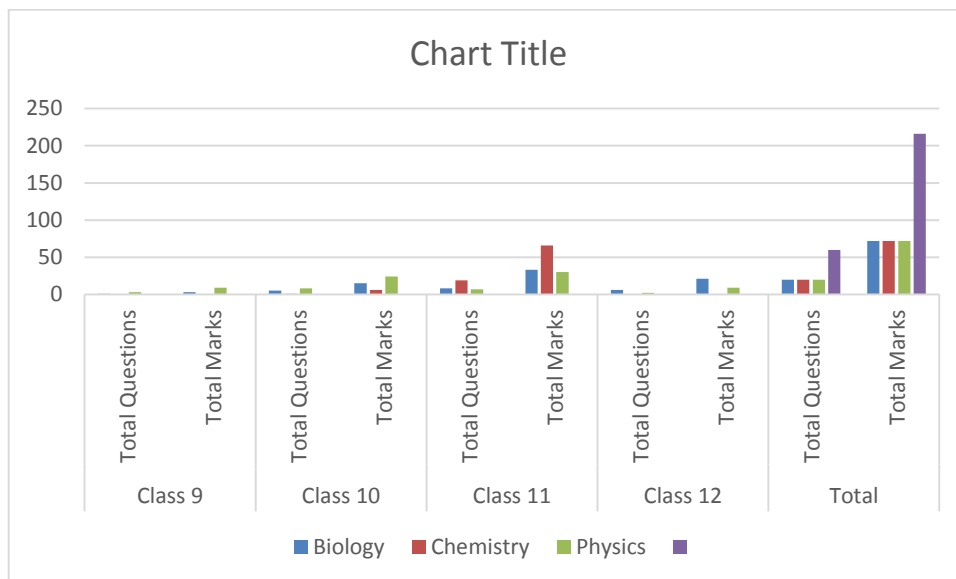
Merit Clause: Approximately 300 students are to be selected for INJSO.

OVERALL MARKS DISTRIBUTION

The medium of test was English only and it comprised of For **Part A1**, each correct answer carries 3 marks whereas 1 mark will be deducted for each wrong answer In **Part A2**, you get 6 marks. If all the correct alternative are marked. No Negative marks in this part.

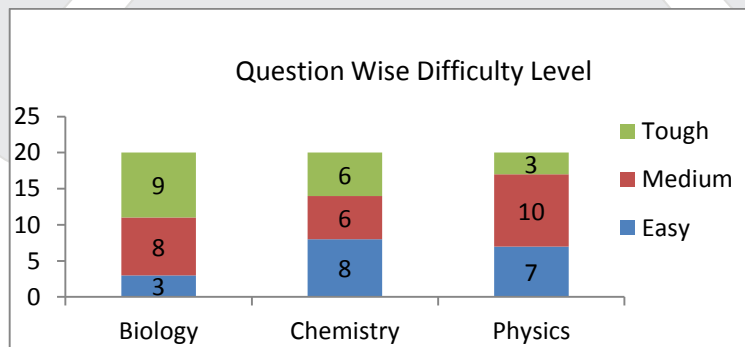
Subject wise breakup is given below.

Subject	Class 9		Class 10		Class 11		Class 12		Total	
	Total Questions	Total Marks	Total Questions	Total Marks	Total Questions	Total Marks	Total Questions	Total Marks	Total Questions	Total Marks
Biology	1	3	5	15	8	33	6	21	20	72.0
Chemistry	0	0	1	6	19	66	0	0	20	72.0
Physics	3	9	8	24	7	30	2	9	20	72.0
									60	216



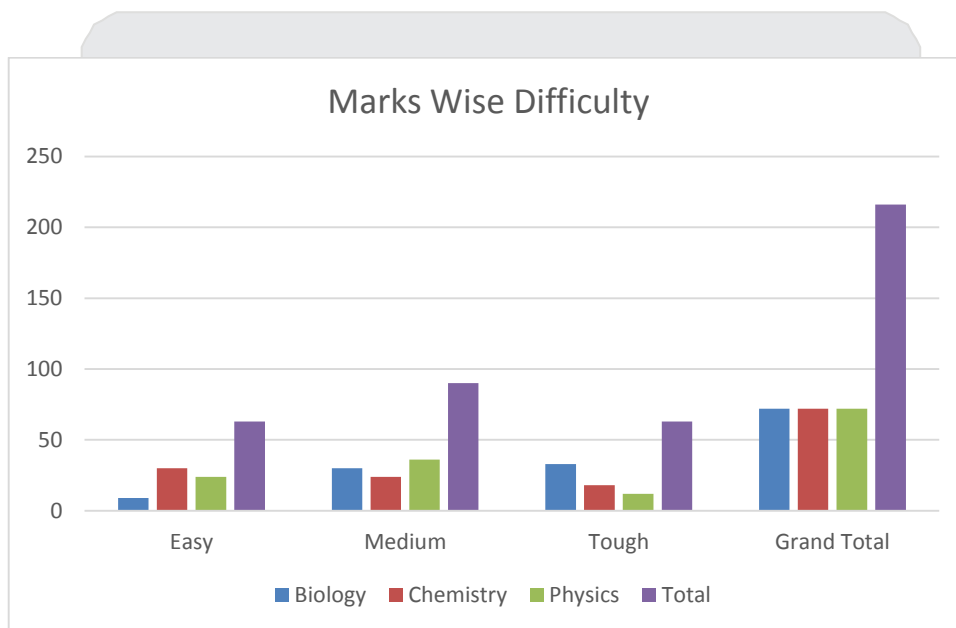
DIFFICULTY LEVEL ANALYSIS: SUBJECT-WISE (NO. OF QUESTIONS)

Difficulty Level	Easy	Medium	Tough	Grand Total
Biology	3	8	9	20
Chemistry	8	6	6	20
Physics	7	10	3	20
Total	18	24	18	60



DIFFICULTY LEVEL ANALYSIS: MARKS WISE

Difficulty Level	Easy	Medium	Tough	Grand Total
Biology	9	30	33	72
Chemistry	30	24	18	72
Physics	24	36	12	72
Total	63	90	63	216

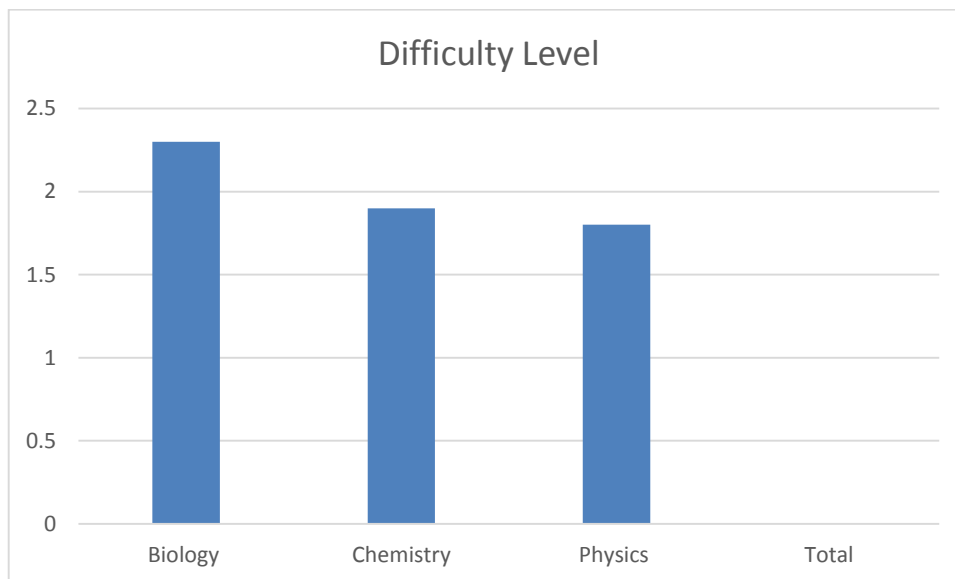


OVERALL DIFFICULTY LEVEL ANALYSIS

In this analysis we have rated every question on a scale of 1 to 3. The ratings are done by expert faculty members of Resonance. The individual ratings are then averaged to calculate overall difficulty level.

- 1: Easy
- 2: Moderate
- 3: Difficult

Subject	Difficulty Level
Biology	2.3
Chemistry	1.9
Physics	1.8
Total	2.0



EXPERT VIEW :

Resonance's Experts feel that Biology was on difficult side as compare to remaining subjects Physics, Chemistry was Moderate as compare to last year. While around 63 Marks can be considered easy overall, 90 marks are moderate 63 marks are considered difficult by Resonance Team.

Overall, it is felt by Resonance Faculty Team that this year paper was on Moderate side as compared to last year paper.

MAS: 80 ± 5

MI: 125 ± 5

SUBJECT WISE ANALYSIS
PHYSICS ANALYSIS

PHYSICS				
S.No.	Topic	Sub-Topic	TOTAL MARKS	(%) WEIGHTAGE
1	Work Energy Power	Energy	3	4.16
2	Electricity	Resistivity	3	4.16
3	Wave Motion	Sound Wave	3	4.16
4	EMI	Lenz Law	3	4.16
5	Fluid	U-tube manometer	3	4.16
6	Light	Spherical lens	3	4.16
7	Work Energy Power	Energy conservation	3	4.16
8	Electricity	Combination of Resistors	3	4.16
9	Pressure	Pressure	3	4.16
10	Electricity	Paralled combination	3	4.16
11	Light	Sperical Mirror	3	4.16
12	Electricity	Combination of Resistors	3	4.16
13	NLM	Frictional force	3	4.16
14	Magnetic effect of Current	Charge on Conductor	3	4.16
15	Heat	Thermometers	3	4.16
16	Gravitation	Orbital Velocity	3	4.16
17	Work Energy Power	Power	6	8.33
18	Electricity	Combination of Resistors	6	8.33
19	Fluid	Relatives Density	6	8.33
20	Kinematics	Velocity - time curve	6	8.33
Grand Total			72	100.00%

CHEMISTRY ANALYSIS

CHEMISTRY			
S.No.	Topic	TOTAL MARKS	(%) WEIGHTAGE
1	Periodic table	3	4.16
2	Hydrogen	3	4.16
3	Hydrogen	3	4.16
4	S-block	3	4.16
5	Chemical Bonding	3	4.16
6	Periodic table	3	4.16
7	Matter	3	4.16
8	GOC	3	4.16
9	Ionic Equilibrium	3	4.16
10	Hydrocarbon	3	4.16
11	Gaseous state	3	4.16
12	Ionic Equilibrium	3	4.16
13	Mole concept	3	4.16
14	Mole concept	3	4.16
15	Mole concept	3	4.16
16	Carbon and its compound	3	4.16
17	Structure of atom	6	8.33
18	Periodic table	6	8.33
19	Equilibrium- ionic equilibrium	6	8.33
20	Redox Rxn	6	8.33
	Grand Total	72	100.00%

BIOLOGY ANALYSIS

Biology				
S.No.	Topic	Sub -Topic	TOTAL MARKS	(%) WEIGHTAGE
1	Transportations	Structure of heart	3	4.16
2	Control and Co-ordination	Reflex Actions	3	4.16
3	Improvement in food	Hybridization	3	4.16
4	Tissue	Epithelium Tissue	3	4.16
5	Heredity and evolution	Dihybrid Cross	3	4.16
6	Control and Co-ordination	Adrenal Gland	3	4.16
7	Control and Co-ordination	Eyes	3	4.16
8	Improvement in food	Storage of Grain	3	4.16
9	Cell biology	Cell division	3	4.16
10	Diversity	Plant Kingdom	3	4.16
11	Cell biology	Chromosome Structure	3	4.16
12	Cell biology	Cell wall	3	4.16
13	Morphology of flowering	Inflorascence	3	4.16
14	Heredity and evolution	Genes	3	4.16
15	Nutrition in plant	Nutrition in Plants	3	4.16
16	Ecology	Population Interaction	3	4.16
17	Diversity	Diversity in animal	6	8.33
18	Heredity and evolution	Control and co-ordination in plants	6	8.33
19	Control and Co-ordination	Control and co-ordination in plants	6	8.33
20	Nutrition in plant	Nutrition in Plants	6	8.33
	Grand Total		72	100.00%

EXPECTED CUTOFF

Overall, it is felt by Resonance faculty team that paper was on tougher side as compared to last year's paper and the cut-off is expected to be lower than that of last year. The expected cut for Rajasthan would be 80-90.