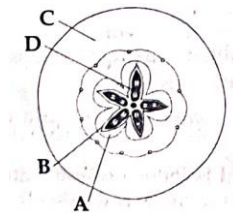


**BOTANY: SEXUAL REPRODUCTION IN FLOWERING PLANTS****DPP No. : 2**

- A dioecious flowering plant prevents both :
  - (1) Autogamy and xenogamy
  - (2) Autogamy and geitonogamy
  - (3) Geitonogamy and xenogamy
  - (4) Cleistogamy and xenogamy
- What type of pollination takes place in Vallisneria?
  - (1) Pollination occurs in submerged condition by water.
  - (2) Flowers emerge above surface of Water and pollination occurs by insects.
  - (3) Flowers emerge above water surface and pollen is carried by wind.
  - (4) Male flowers are carried by water currents to female flowers at surface of water.
- The wheat grain has an embryo with one, large, shield-shaped cotyledon known as:
  - (1) Coleorrhiza
  - (2) Scutellum
  - (3) Coleoptile
  - (4) Epiblast
- Which part of the fruit, labelled in the given figure makes it a false fruit?



- (1) C→Thalamus
  - (2) D→Seed
  - (3) A→ Mesocarp
  - (4) B→ Endocarp
- The residual persistent part which forms the perisperm in the seeds of beet is :
  - (1) Calyx
  - (2) Endosperm
  - (3) Nucellus
  - (4) Integument
- What is the function of tassels in the corn cob ?
  - (1) To trap pollen grains
  - (2) To disperse pollen grains
  - (3) To protect seeds
  - (4) To attract insects

7. In angiosperms the correct sequence of formation of female gametophyte in the ovule
- 3 successive free nuclear division functional megaspore.
  - Degeneration of 3 megaspores
  - Meiotic division in megaspore mother cell
  - Migration of 3 nuclei towards each pole.
  - Formation of wall resulting in seven cellular embryo sac.
- Choose the correct answer from the options below:
- (A), (B), (C), (D), (E)
  - (C), (E), (A), (D), (B)
  - (B), (C), (A), (D), (E)
  - (C), (B), (A), (D), (E)
8. The coconut water from tender coconut represents :
- Free nuclear endosperm
  - Endocarp
  - Fleshy mesocarp
  - Free nuclear proembryo
9. Which one of the following statements is correct ?
- The seed in grasses is not endospermic.
  - Mango is a parthenocarpic fruit
  - A proteinaceous aleurone layer is present in maize grain.
  - A sterile pistil is called a staminode.
10. Match **column I** with **column II**

	Column I		Column II
(A)	Albuminous seed	(i)	Pea, ground nut
(B)	Non albuminous seed	(ii)	Wheat, barley
(C)	Apomixis	(iii)	Banana
(D)	Parthenocarpic fruit	(iv)	Asteraceae & grasses

- A →(i), B →(iv), C →(iii), D → (ii)
- A →(ii), B →(i), C →(iv), D →(iii)
- A →(ii), B →(iv), C →(i), D →(iii)
- A →(ii), B →(iv), C →(iii), D →(i)