



**Resonance**<sup>®</sup>  
Educating for better tomorrow

TARGET : NEET (UG) 2024

Course : SARANSH (Youtube Live CRASH COURSE)

**P/I-CHEMISTRY**

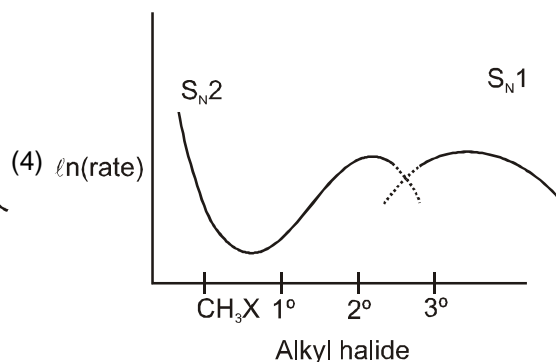
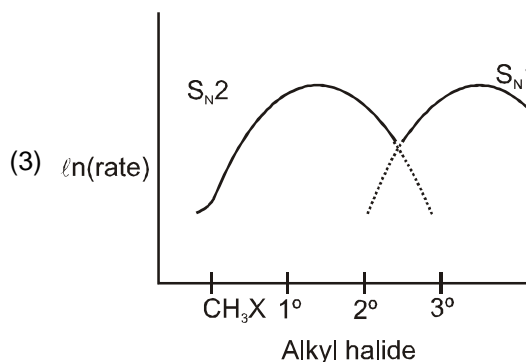
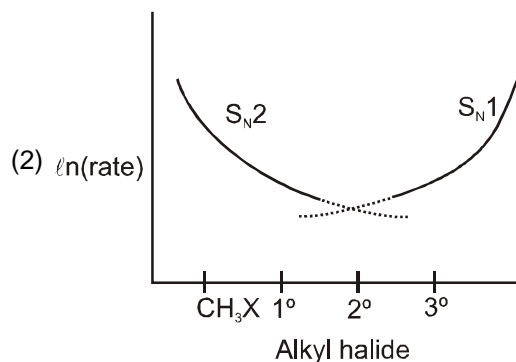
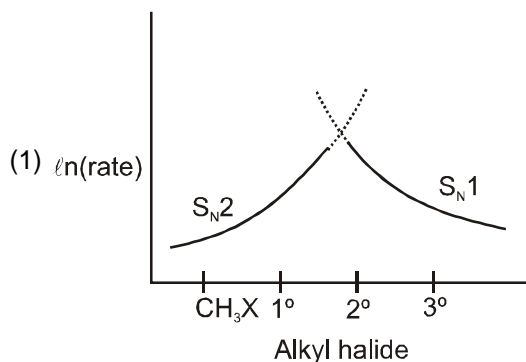
**DPP**

DAILY PRACTICE PROBLEMS

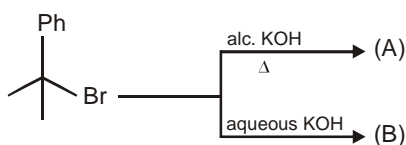
**DPP NO. 2**

**DPP No. : 2**

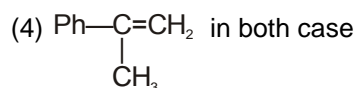
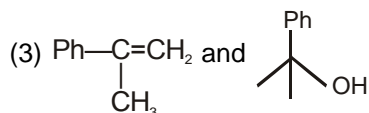
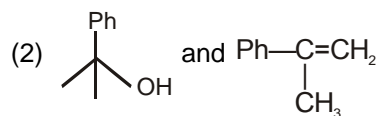
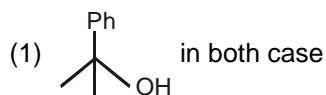
1 Which of the following curves correctly represents  $S_N1$  vs  $S_N2$  ?



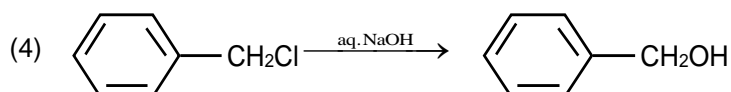
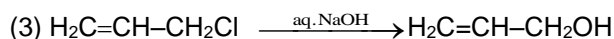
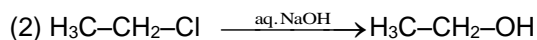
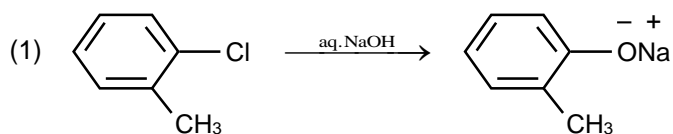
2.



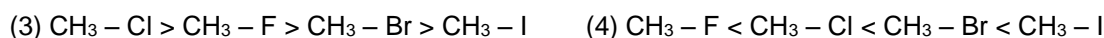
'A' & 'B' are respectively:



3. The hydrolysis reaction that takes place at the slowest rate, among the following is



4. The correct sequence of bond enthalpy of 'C-X' bond is :



5. Elimination reaction of 2-Bromo-pentane to form pent-2-ene is :

(a)  $\beta$ -Elimination reaction

(b) Follows Zaitsev rule

(c) Dehydrohalogenation reaction

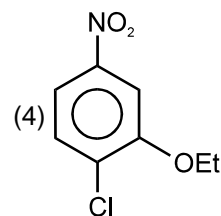
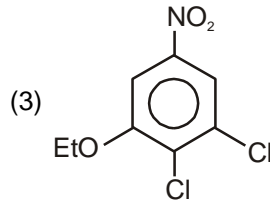
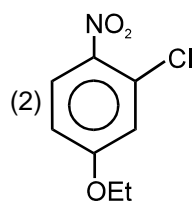
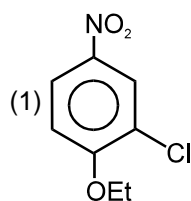
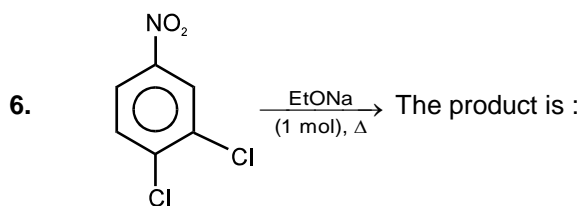
(d) Dehydration reaction

(1) (a), (c), (d)

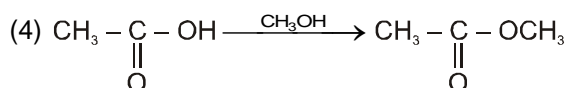
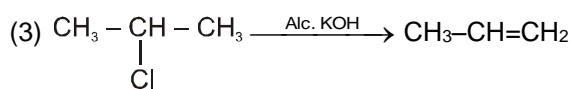
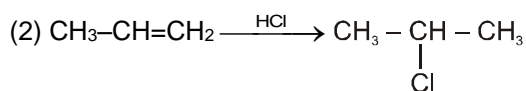
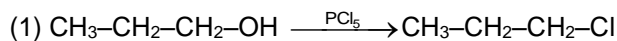
(2) (b), (c), (d)

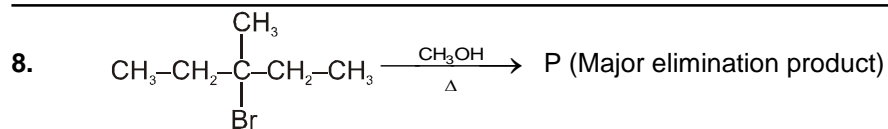
(3) (a), (b), (d)

(4) (a), (b), (c)

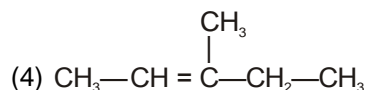
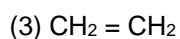
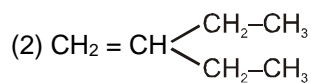
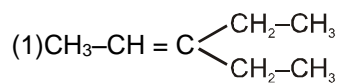


7. Which of the following reaction is an elimination reaction?

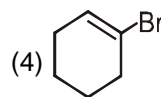
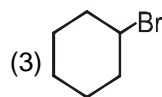
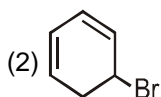
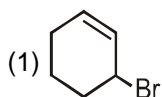




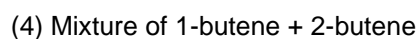
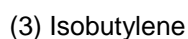
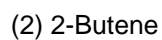
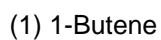
The major elimination (E-1) product P is :



9. Which of the following give fastest reaction with alcoholic KOH?



10. A mixture of 1-chlorobutane and 2-chlorobutane when treated with alcoholic KOH gives -



### Answer Key

- 1 (2) 2. (3) 3. (1) 4. (1) 5. (4) 6. (1) 7. (3)  
8. (4) 9. (2) 10. (4)